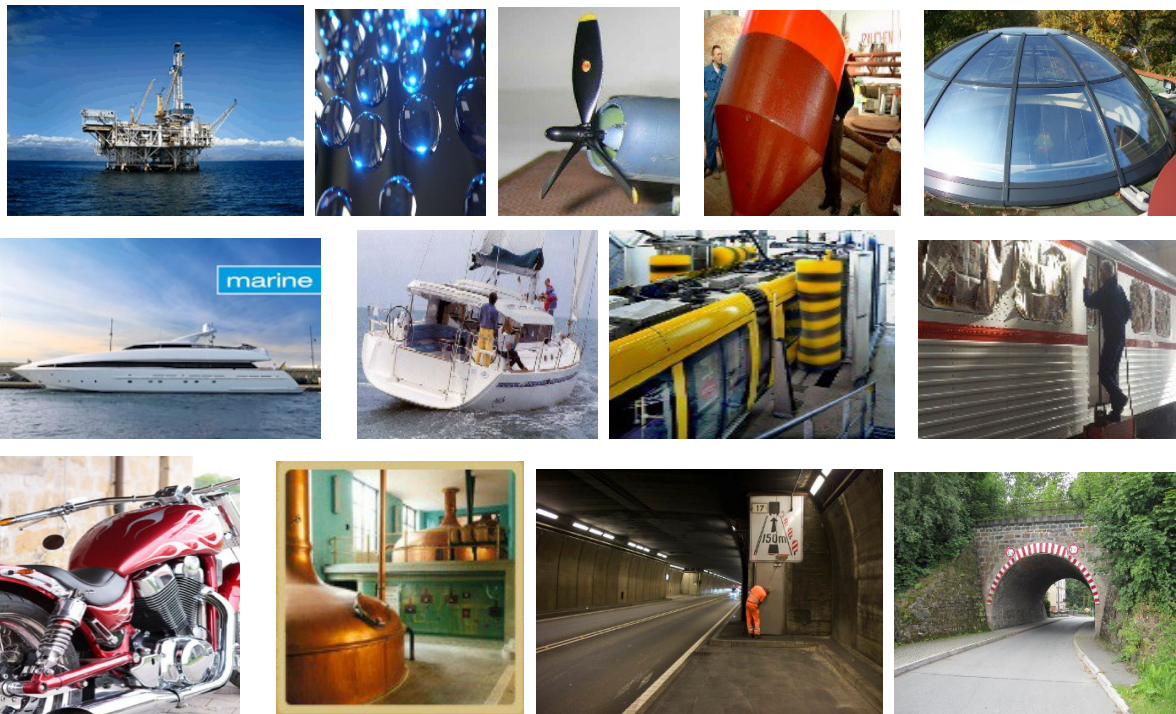


Product Data Sheet

NewPro Long-Term Protective Coating RK CCS



This highly-technological special coating has been especially developed for demands in the areas of marine, military and aviation (aircraft industry). This protective coating is also suitable for many other uses, such as: transport, rail-traffic, automobile industry, food processing industry, stone and metal. The coating is exceptionally resistant against corrosion, abrasion and temperature.

If the surrounding temperature is raised by heat radiation from 20°C to 50°C to 70°C, then the adhesion is accelerated and a quicker hardening results. NewPro Long-Term Protective Coating CCS bonds to the treated surface and forms an abrasive-resistant coating with high adhesive qualities. The thin transparent coating has an extremely high structural density.

Short Characteristics

Usage Temperature	m ² each Litre	Durability of the Coating	Durability of the Liquid	Storage Temper- ature
+5°C to +35° C	40 – 100	Up to 15 years	24 Months in original contain- er; 6-12 Months after opening	5°C to + 20°C

Product Properties

- Contains solvents (no water)
- Very reactive and resistant to a large number of various organic solvents .
- Clear, colourless liquid based on silanes.
- Extremely abrasion-resistant protective coating with very high adhesive properties and high impact resistance.
- Resilient, even against rocket fuels.
- Easy to Clean effect, coated surfaces stay cleaner longer and are much easier to clean (without aggressive chemicals).
- Ideally suited as a water and contamination repelling sealing for non-absorbent materials in indoor and outdoor areas.
- The burning-in of cable abrasion and sparking of overhead cables for catenary vehicles is prevented.
- Longer cleaning intervals und reduction of the cleaning and maintenance costs.
- The product can be applied by spray or wiped on.
- Food-safe
- Extremely resistant against corrosion, alkaline solutions, abrasion, sea-water and salty air (Salt spray tests have been carried out).
- **Heat-resistant up to + 750°C operating temperature.**
- **Cold-resistant down to - 90°C.**
- **Highly effective up to 15 years.**

NewPro Long-Term Protective Coating RK CCS can for example be used on the following materials:

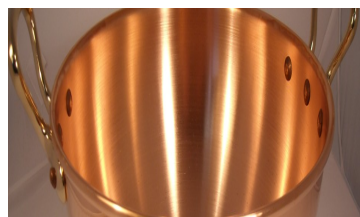
- | | |
|---|------------------------------|
| ● Ferrous metals (steel) | ● Powder-coated surfaces |
| ● Non-ferrous metals | ● Plastics (GFK) |
| ● Galvanised (zinc-plated metals) | ● Anodised aluminium, copper |
| ● Painted surfaces | ● Marble, ceramics, granite |
| ● Glass, Solar installations, and much more | |

NewPro Long-Term Protective Coating RK CCS can be used for a large variety of commercial purposes:

- Military Industry (Ships, aircraft, tanks, weapons etc.)
- Food processing industry. Preparation equipment, baking ovens and much more
- Aerospace (Turbines, motors, wings, surface protection etc.)
- Oil Industry (Pipelines, drilling towers and platforms, connecting joints, beams etc.)
- Boat and Ship Building, Antifouling
- Automotive Industry (Engine manufacture, body work, etc), Paint and wheel-rim protection
- Railway Industry (Engines)
- Trains, Street Cars, Catenary vehicles (Surface Protection), Signs
- Nautica – Anti-adhesive coating for ship-hulls, buoys, bollards etc. (Antifouling substitute)
- **NewPro Long-Term Protective Coating RK CCS is also recommended for use on:**
Marble/Granite: Permanent protection against environmental pollution, car exhaust fumes, acid rain, algae deposits, oil, vinegar, red wine, fruit juices, cosmetics etc.
- **Stainless Steel:** Extreme abrasive resistance is achieved.

The newest generation of SiO_2 technology offers the user a protective coating that has higher strength, higher temperature tolerance and partly a massive corrosion resistance.

Application Examples:



NewPro – Neue Produkte & innovative Ideen für Oberflächen und Reinigung

Lutz-Henning Robitzsch

Ricarda-Huch-Weg 2 D-40789 Monheim a. Rhein

Tel: +49 (0) 2173/964280 Fax: +49 (0) 2173/964282

eMail: news@newpro.de Internet: www.g-pro.com

**GRAFFITI
MAGIC**

